

Piping. Systems. Solutions.

FOR OVER 85 YEARS

Solutions for Marine Piping Systems



History in Maritime

1940's Marine
Brochure



Victaulic Installed on Liberty Class Ship
John W. Brown 1942 – Ballast Water



Built at Bethlehem Fairfield Shipyard - Baltimore



Approvals & Applications

- Our products are IACS approved



- For new ship construction, retrofits and repairs on a variety of vessel types.



Global Availability

•Foundries, Manufacturing Facilities, Sales Representatives and Distribution Centers located across the globe.

Victaulic Authorized Maritime Spare Parts Distributor in Europe:

ROMEKO marine sp. z o.o.
80-852 Gdansk, ul. Dyrekcyjna 6, Poland
office e-mail ROMEKOmarine@romeko.com
website www.ROMEKOmarine.com



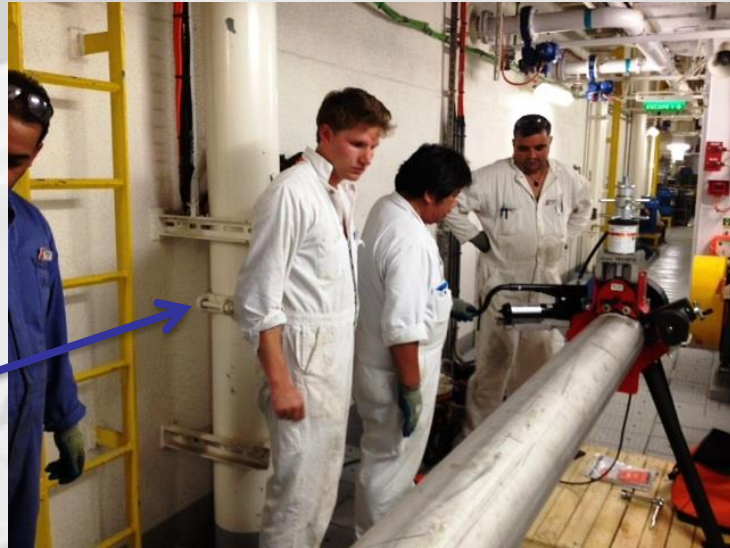
How our system works

- The 4 elements of a Victaulic Grooved joint:
 - Pipe Groove
 - Gasket
 - Housing
 - Bolt & nuts



Roll Grooving Pipe

**Roll Grooving aboard
“Carnival Freedom” while
underway to refit corroded
stainless steel pipes.**
(Original Installation also
incorporated Victaulic joints)



roll groovers



SPECIFICATIONS

	FIELD PORTABLE	FIELD FABRICATION	PLANT/SHOP FABRICATION
PIPE MATERIAL	Steel, Stainless, Aluminum, PVC, Copper	Steel, Stainless, Aluminum, PVC, Copper, Lightwall SS	Steel, Stainless, Aluminum, PVC, Copper, Lightwall SS
PIPE RANGE SIZE	3/4" – 6" (26,9mm – 168,3mm)	3/4" – 16" (26,9mm – 406,4mm)	3/4" – 36" (26,9mm – 914,0mm)
	Lightweight, manually operated	Stable, easy to adjust, heavy duty	Fully automated, heavy duty

Reliability

National Steel and Shipbuilding Co – NASSCO San Diego, CA

- 2002 Completed construction of M. V. Midnight Sun and M. V. North Star for TOTE – also known as Ro-Ro 491 and 490.

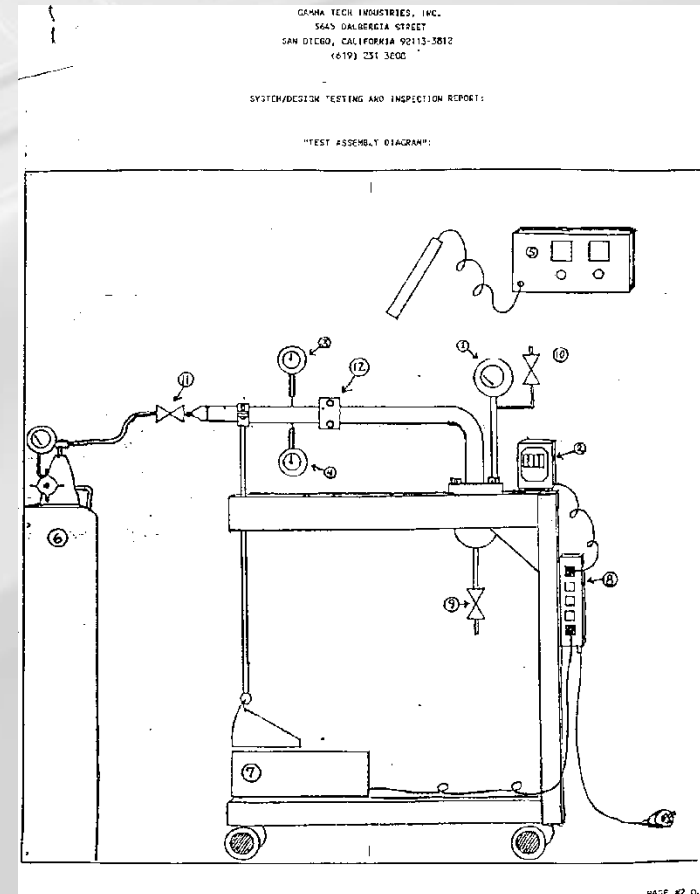
- Testing of 2” S/07 Rigid Coupling to provide “a proof of serviceability/ survivability for an estimated 40 years.”

- 240psi Salt Water

- Movement: 1/2”

- Total Cycles: 89,644,800

- Leaks: 0



Pipe Preparation Considerations for On-Board Retrofitting

Confirm Victaulic Grooving Tools match the project needs

			
roll groovers			
SPECIFICATIONS	FIELD PORTABLE	FIELD FABRICATION	PLANT/SHOP FABRICATION
PIPE MATERIAL	Steel, Stainless, Aluminum, PVC, Copper	Steel, Stainless, Aluminum, PVC, Copper, Lightwall SS	Steel, Stainless, Aluminum, PVC, Copper, Lightwall SS
PIPE RANGE SIZE	3/4" – 6" (26,9mm – 168,3mm)	3/4" – 16" (26,9mm – 406,4mm)	3/4" – 36" (26,9mm – 914,0mm)
	Lightweight, manually operated	Stable, easy to adjust, heavy duty	Fully automated, heavy duty

Method to achieve proper square cut on pipe:

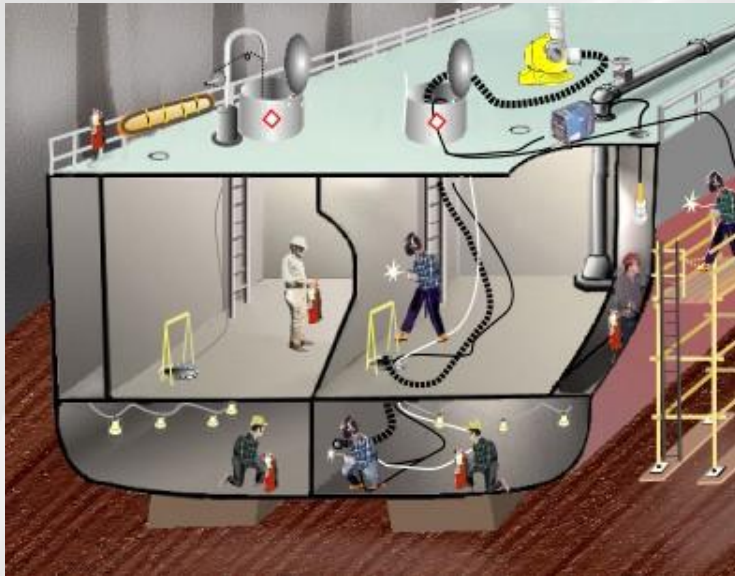


Pipe Roller Stand matches project needs:

Safety Issues – Hot Works

We eliminate:

- Fire Watch
- Toxic fume extraction
- Rescue procedures
- Obstructions / Trip Hazards



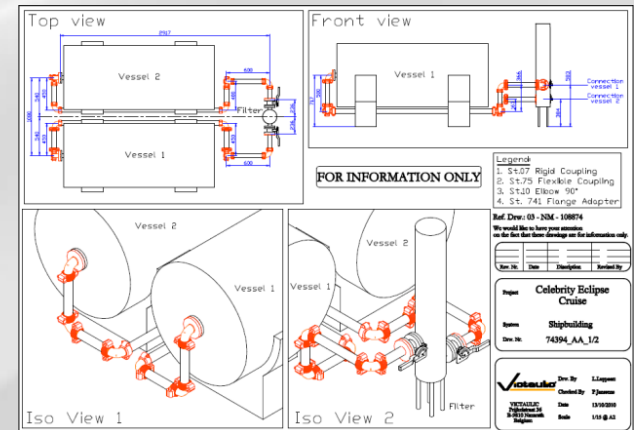
Ballast & Scrubber Retrofits

- 50 + retrofits made so far with CMA-CGM, Stena, Aida, Uglund, SMT shipping..
- Galvanized or GRE pipes.
- Robinet grooved seawater butterfly valves up to 12". DNV-GL approved.
- No Hot works or Fire watch.
- Ease and speed of installation.
- Space and weight savings.-

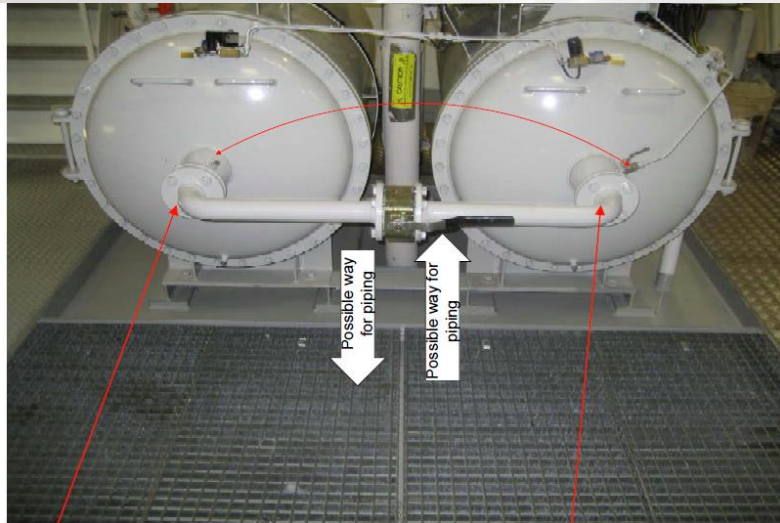


Construction Scheduling / Time “Out of Service”

- Cruise Ship in port – Victaulic Drawings, Tool and Materials ready to board vessel and complete the work



Construction Scheduling / Time “Out of Service”



Outlet FFU and Inlet vessel 2

Outlet vessel 1 and Inlet FFU



Full repair completed in 3 hours during a 6 hour stop.